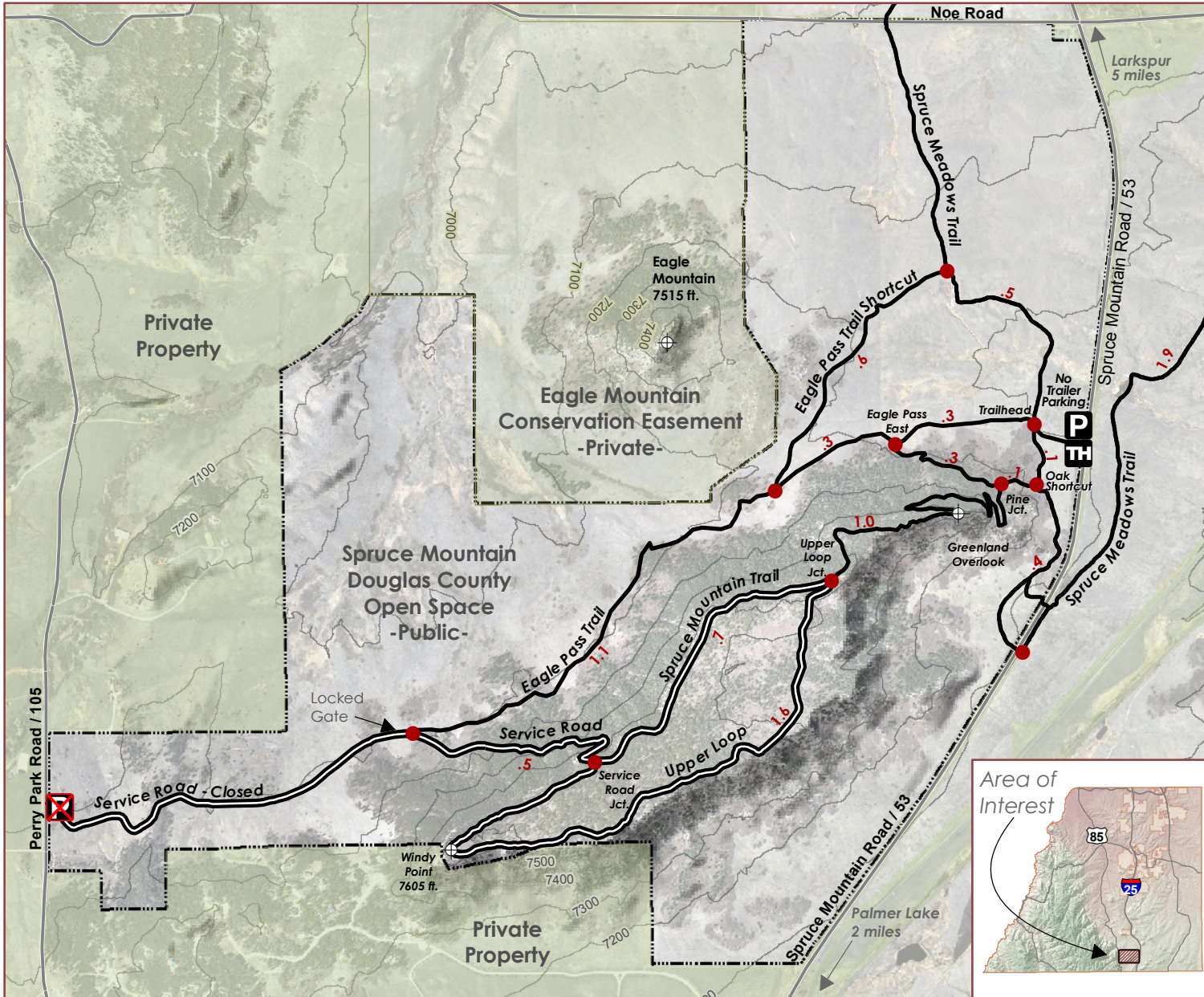


# Spruce Mountain Open Space Trail



### Trail Uses

- Hikers
- Horses
- Dogs on Leash
- Mountain Bikers

### Trail Closures

- No Motorized Vehicles
- No Unleashed Pets

### General Information

The 5.5-mile Spruce Mountain Trail gently switchbacks up to fabulous rocky overlooks and a loop around the mountaintop through pines and firs. Descend the Service Road to catch the scenic Eagle Pass Trail, returning you to the trailhead via meadows and trees with great views of Eagle Mountain.

### Directions

**Spruce Mountain Trailhead:**  
 I-25 S to Larkspur Exit. Go south on Spruce Mountain Road 6 miles (one mile past the intersection with Noe Road). Trailhead for cars is on right.

**Spruce Meadows Trailhead:**  
 Horse trailers park here. I-25 to Greenland Exit 67. West ¼ mile on Greenland Road, curve south ½ mile, and west over RR tracks ¼ mile. Spruce Meadows trailhead is on your left. Cars can continue west on Noe Road for 1.5 miles to Spruce Mtn. Rd. Go left 1 mile to Spruce Mtn. Trailhead on right.

Two-Track  
 Trails  
 Roads  
 100 Foot Contours  
 Spruce Mtn. Bndy.

Sign Posts  
 Points Of Interest  
 Private Property

0.3 0 0.3 Miles  
 N

### Spruce Mountain Trail - Profile

